

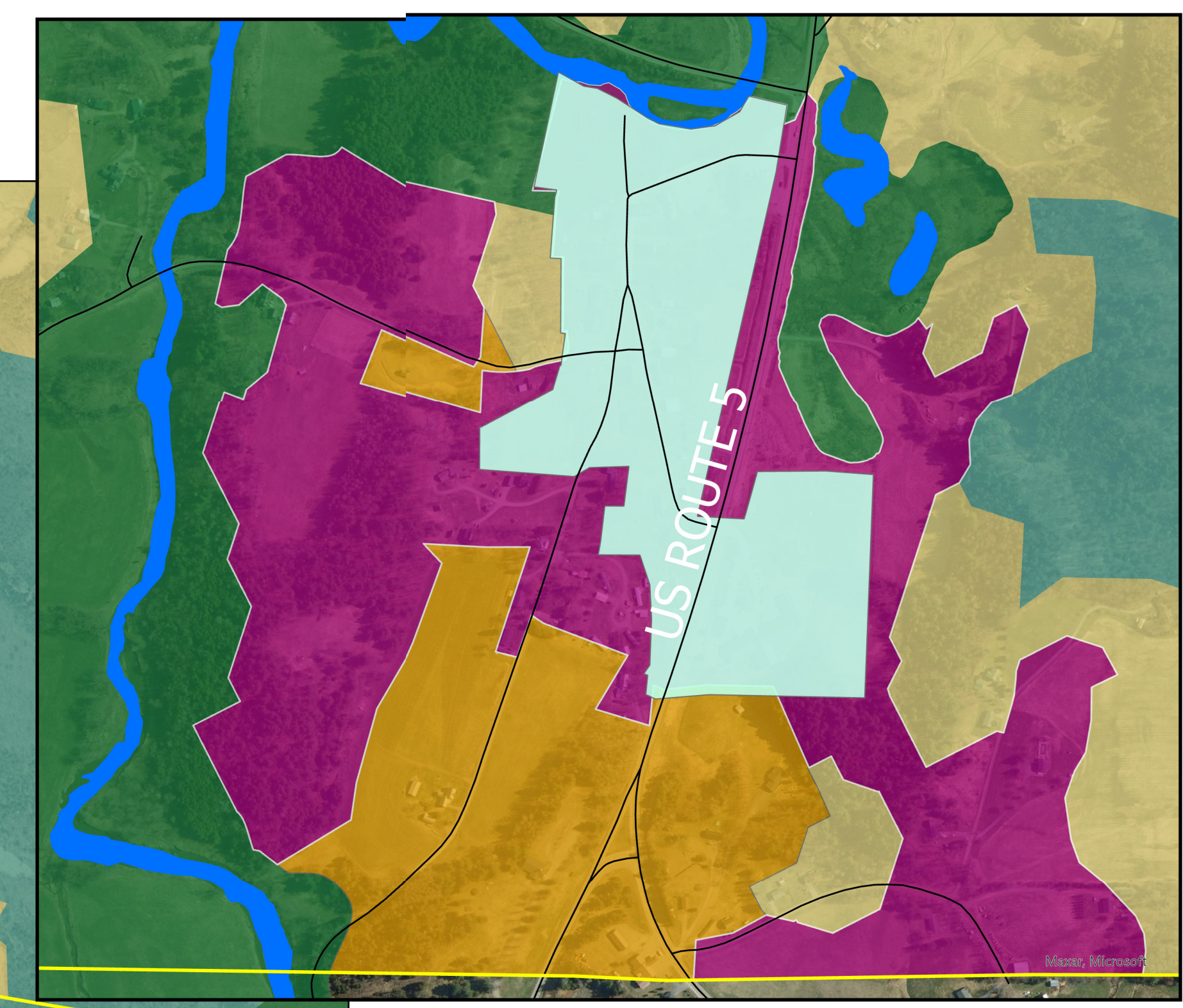
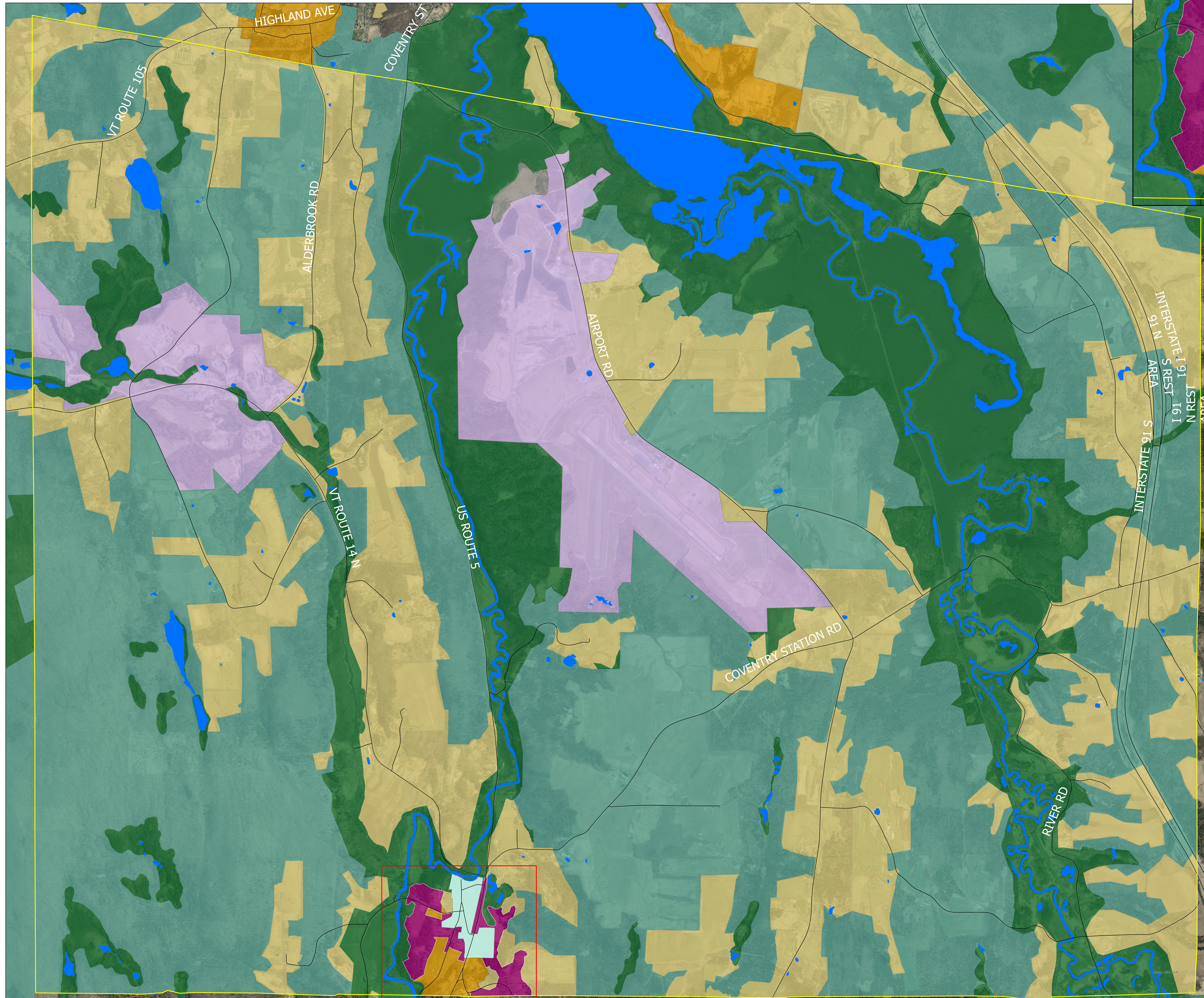
NOTICE TO COVENTRY RESIDENTS

Planning Commission Meeting – August 5, 2025

The Northeastern Vermont Development Association (NVDA) will attend the Coventry Planning Commission meeting on **Tuesday, August 5 at 5:30 PM** to present a proposed map for inclusion in the regional plan, as required by Act 181 (2024).

Please join us for this informational meeting to review and discuss the map below.

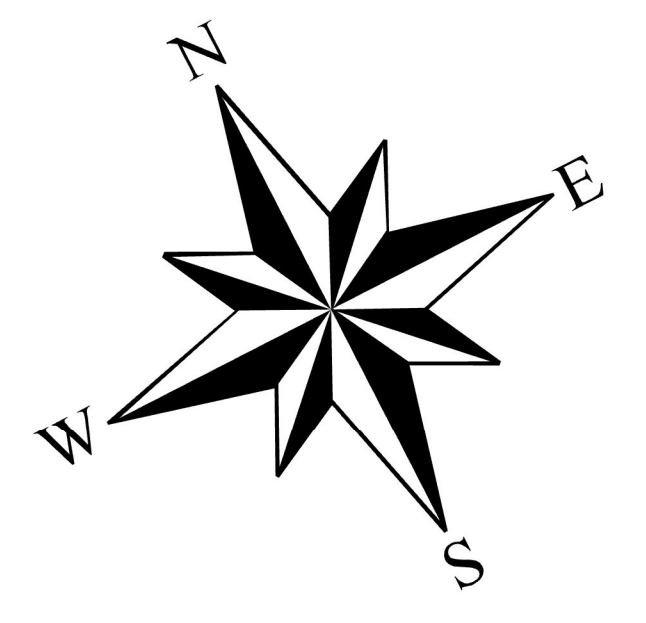
Coventry Planning Commission



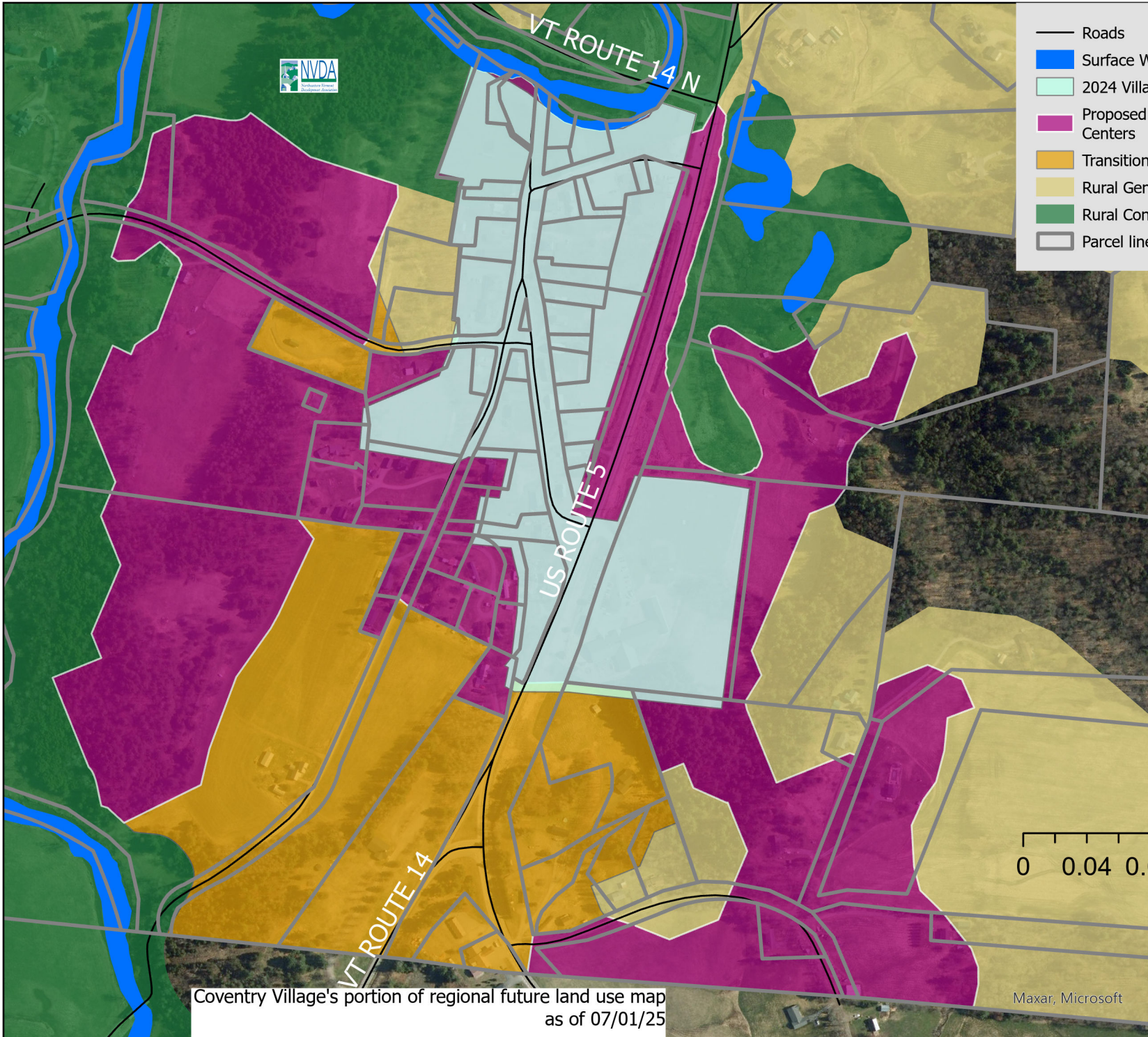
Coventry Village Inset Map

- Town of Coventry
- Roads
- Surface Water
- 2024 Village Centers
- Proposed Village Centers
- Transition/Infill Areas
- Enterprise Areas
- Groundwater Contamination
- Rural General
- Rural Ag/Forestry
- Rural Conservation

0 0.1 0.2 0.4 Miles



Warning: this data is for planning purposes only and does not replace a survey or engineering study. Because this map is developed from various scale sources, there may be some discrepancies between data layers



- Roads
- Surface Water
- 2024 Village Centers
- Proposed Village Centers
- Transition/Infill Areas
- Rural General
- Rural Conservation
- Parcel lines (Coventry)



Warning: this data is for planning purposes only and does not replace a survey or engineering study. Because this map is developed from various scale sources, there may be some discrepancies between data layers.

0 0.04 0.09 0.18 Miles

Coventry Village's portion of regional future land use map as of 07/01/25

Maxar, Microsoft

NOT a zoning map